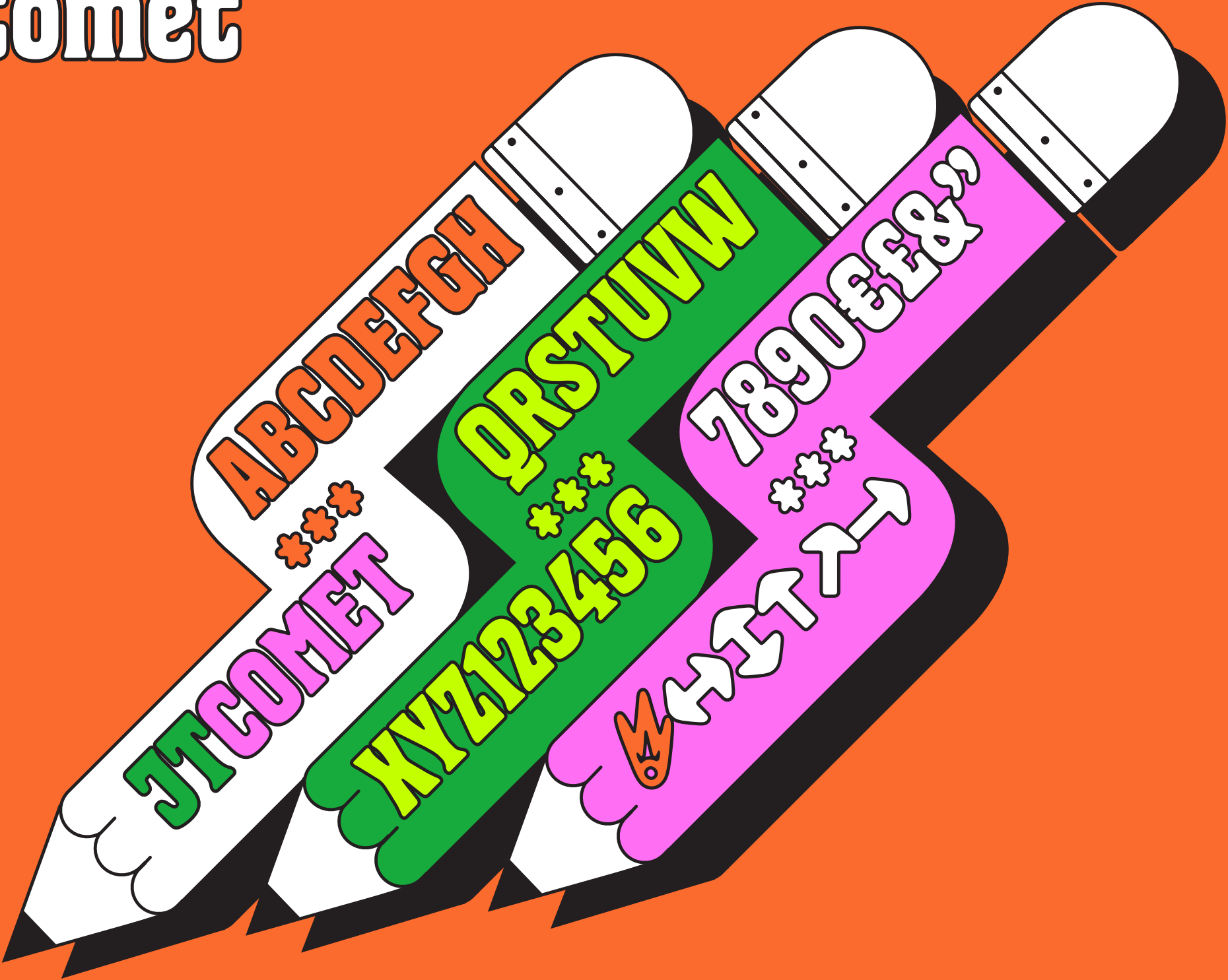


# JT Comet



ABCDEFGH

QRSTUW

7890€£&''

JT COMET

XYZ123456

\*\*\*  
\*\*\*  
\*\*\*  
↑↑↑



**JT Comet**

***JT Comet Italic***

**University of  
Mountain,  
Hills & Rocks,  
Visit Reykjavik in  
May 2026**

**Aa**  
***Aa***

***Kuniyuki  
Takahashi,  
Early Tape  
Works  
1986-1993***

**Nattvardsgästerna**  
***Bostnyche typographie***  
**Dans le Jardin de l'Ogre**  
***Puszcza Białowieska***  
**Valčík na rozloučenou**

**TAKASHI KOKUBO**  
*Green*  
*Sound Music*  
*For Nine*  
*Postcards 1982*

**Former Japanese Mayor  
*Kotoku Wamura* was mocked for  
spending billions on building a  
floodgate, but years after his death,  
it saved countless lives from a  
devastating tsunami.**

**The Olivetti Lettera 22,  
introduced in 1950, shaped  
portable typewriter design.**

**\*\*\***

**The 3rensho bicycles,  
produced in 1970s,  
influenced Japanese racing  
frame craftsmanship.**

**“REAL G’S MOVE  
IN SILENCE  
LIKE LASAGNA”**

**Музей природничої  
історії Львівського  
національного  
університету ❧  
Львів 79000 Україна**

**In 2015, the average consumer book price in the UK for a standard paperback was about £7.48 (c. €8,75, \$8,30).**

JT Comet Display pt. 100, Proportional Lining Figures

**0123456789**

JT Comet Display pt. 100, Proportional Oldstyle Figures

**0123456789**

JT Comet Display pt. 100, Tabular Lining Figures

**0123456789**

JT Comet

JT Comet Display pt. 210, Default g

**Language**

JT Comet Display pt. 210, Alternate g

**Language**

OpenType Features

JT Comet

JT Comet Display pt. 210, Default t

Geometry

JT Comet Display pt. 210, Alternate t

Geometry

OpenType Features

**Quotation**

**Q**uotation

**Navigation**

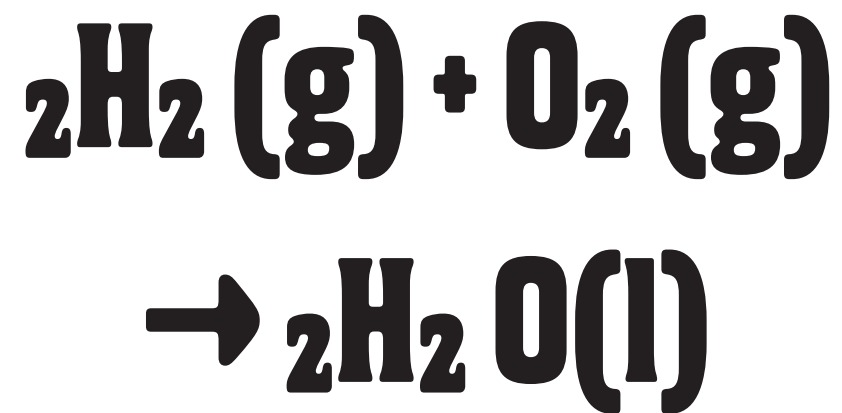
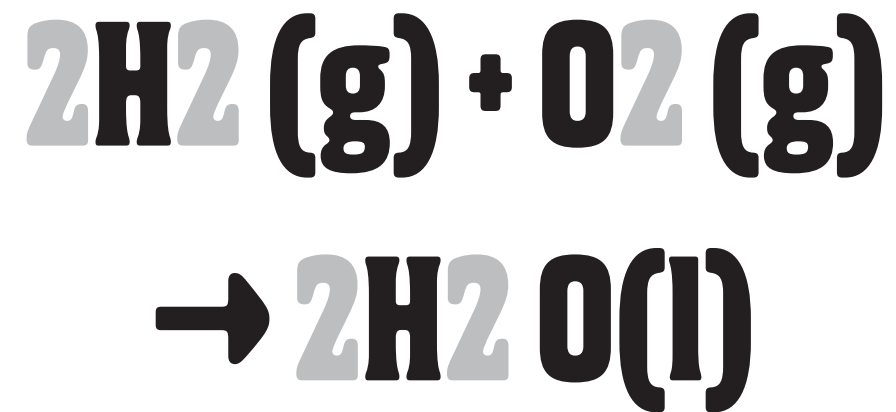
**Navigation**

**info@julytype.com**  
**{(-JULYTYPE)}**

**INFO@JULYTYPE.COM**  
**{(-JULYTYPE)}**

$$2 \times \{3 - [5 + 2 \times (4 - 1)]\} = -16$$

$$2 \times \{3 - [5 + 2 \times (4 - 1)]\} = -16$$



**F(x, y)<sup>2</sup> + x<sup>32</sup> \* y<sup>47</sup> = z<sup>2</sup>**

**F(x, y)<sub>2</sub> + X<sub>32</sub> \* Y<sub>47</sub> = Z<sub>2</sub>**

**Just add  $\frac{1}{2}$ ,  $\frac{3}{4}$   
or  $\frac{5}{8}$  of Cocoa**

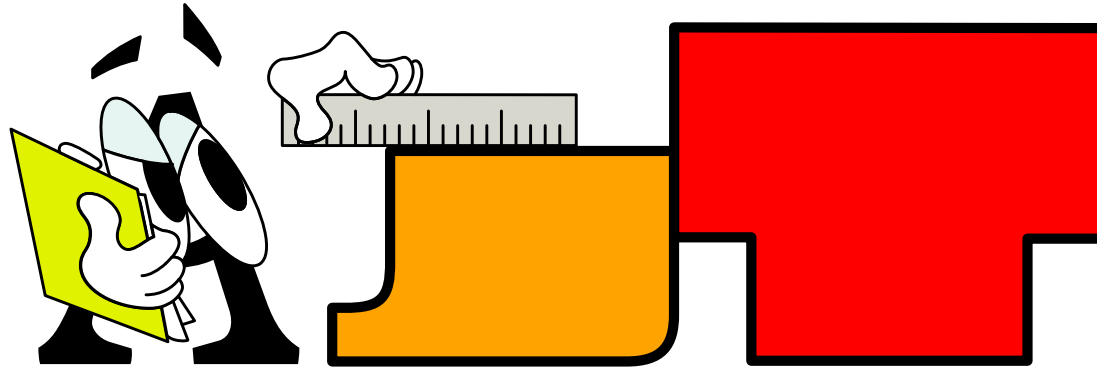
**Just add  $\frac{1}{2}$ ,  $\frac{3}{4}$   
or  $\frac{5}{8}$  of Cocoa**

«iHOLA!»

«iHOLA!»







#### Files Formats

Desktop: OTF, TTF  
 Web: WOFF, WOFF2  
 App: OTF  
 Variable font: TTF, OFF, WOFF2

#### Licensing

July Type offers two usage scenarios, standard and extended. The specific license type is indicated on the invoice provided to the Licensee. License upgrades may be necessary if the Licensee's Company Size surpasses the limits outlined in the License Metrics section of the invoice.

#### Standard License

Standard License allows the Licensee to use the typeface software to create printed and digital assets, such as documents, books, objects, merchandise, signage, and more, for a single brand. Terms and Conditions: The Licensee may install and use the typeface software on all devices within their organization for the purpose of creating the aforementioned materials. Each client using the typeface software for distinct brands must acquire their own license. Modification, renaming, or conversion of the typeface software is strictly prohibited. Sharing, selling, leasing, or distributing the typeface software to third parties is prohibited.

#### Extended License

The Extended License allows the Licensee to use the typeface software to create both printed and digital assets for a single brand, including documents, books, objects, merchandise, signage, websites, social media content, video and motion graphics, broadcasting, streaming, and digital advertising. The license also covers the use of the typeface software in WOFF and WOFF2 formats through the @font-face CSS method for a single web domain. The typeface software may be used only on websites owned or controlled by the Licensee under the licensed domain name, including sub-domains. There are no restrictions on web traffic for the licensed domain. Any additional web domain requires a separate license. Web

design agencies and hosting providers may not share a single Webfont License across multiple clients or websites. The typeface software may be used on websites where visitors create styled content using the fonts for text input or editing; however, such content may not be exported or used outside the website itself, including for merchandise, PDFs, image files, or physical products. The Licensee may not modify, convert, or edit the typeface software except for creating subsets when technically necessary. The use of the typeface software with technologies other than the @font-face method is not permitted. The Licensee must also take reasonable measures to protect the typeface software from unauthorized access, including preventing hotlinking and restricting direct downloads unrelated to styling text on the licensed website.

#### JT Student Pack

Students may use the typefaces in the student package to create any self-initiated work, whether non-commercial or commercial, throughout the duration of their studies. After completing their studies, fonts may continue to be used for the self-initiated works, for example portfolio website, music album cover, tshirt, etc. If students take on client work, either during or after their studies, the student package is no longer valid for these projects, and a separate license must be purchased by the client using the standard license metrics, based on company size and license type.

#### Designers of JT Comet

Edward Dzułaj is a type designer based in The Hague, Netherlands. He completed his studies in Graphic Design (BA) and Type and Media (MA) at the Royal Academy of Arts in The Hague before founding July Type Foundry in 2024. His typefaces have been featured in both cultural and commercial contexts. Since 2022, he has served as a faculty member at the Royal Academy of Arts The Hague (KABK), where he teaches graphic and type design.

Lev Rastvortsev is a type designer based in Sumy, Ukraine. Completed an internship at July Type, focusing on font design and production. Type design with motion typography.

Dominika Nika Langosz is a typeface designer from a small village in Silesia. Graduated with honours in Graphic Design from the Academy of Fine Arts in Wrocław. She became interested in typeface design rather than graphic design and illustration, which led her to learn it on her own, internship at Monotype, further specialisation and graduation from TypeMedia in 2023. Learns Cyrillic, Greek and Arabic typeface design so that her typefaces are accessible to the broadest range of languages. Nika enjoys vernacular typography found in workshops, monuments, chapels, gravestones, tools and prints. Collects old books about lettering and calligraphy in search of forgotten and peculiar designs.

#### Contact

July Type Foundry  
 De Constant Rebecqueplein 20B, 2.09  
 2518 RA, The Hague Netherlands  
[info@julytype.com](mailto:info@julytype.com) | [julytype.com](https://julytype.com)

© 2026 July Type Foundry | All rights reserved  
 This file may be used for evaluation purposes only

Font Version  
 1.000